



AGENDA

Business Services Committee

John Benbow, Jr., Chairman
Katherine Bielski-Medina, Member
Julie Des Jarlais, Member
John A. Krings, President

May 2, 2022

LOCATION: East Jr. High, 311 Lincoln St., Wisconsin Rapids, WI 54494
Cafeteria

TIME: Immediately following the Educational Services Committee Meeting, but not before 6:15 p.m.

- I. Call to Order
- II. Public Comment

Persons who wish to address members of the Committee may make a statement pertaining to a specific agenda item. The Committee Chair will establish limits for speakers due to time constraints. Comments made by the public shall be civil in content and tone. Speakers bear the personal risk if comments made are defamatory, slanderous, or otherwise harmful to another individual. Please keep in mind that this is a Committee meeting of the Board open to the public, and not a public hearing.

- III. Actionable Items
 - A. Grant Elementary New Serving Line – Approval
 - B. Stadium and Quadplex Sustainability Plan – Approval
 - C. Performing Arts Center Curtain Purchase – Approval
 - D. Performing Arts Center Carpet Replacement – Approval
 - E. Elementary iPad Purchase – Approval
 - F. Central Storage Rooftop Units - Approval
- IV. Updates and Reports
 - A. Purchases – Update
- V. Agenda Items
- VI. Future Agenda Items

The Wisconsin open meetings law requires that the Board, or Board Committee, only take action on subject matter that is noticed on their respective agendas. Persons wishing to place items on the agenda should contact the District Office at 715-424-6701, at least seven working days prior to the meeting date for the item to be considered. The item may be referred to the appropriate committee or placed on the Board agenda as determined by the Superintendent and/or Board president.

With advance notice, efforts will be made to accommodate the needs of persons with disabilities by providing a sign language interpreter or other auxiliary aids, by calling 715-424-6701.

School Board members may attend the above Committee meeting(s) for information gathering purposes. If a quorum of Board members should appear at any of the Committee meetings, a regular School Board meeting may take place for purposes of gathering information on an item listed on one of the Committee agendas. If such a meeting should occur, the date, time, and location of the Board meeting will be that of the particular Committee as listed on the Committee agenda **however, no deliberation or action will be taken by other Committees or the full Board of Education.**



BACKGROUND

Business Services Committee

John Benbow, Jr., Chairman
Katherine Bielski-Medina, Member
Julie Des Jarlais, Member
John A. Krings, President

May 2, 2022

LOCATION: East Jr. High, 311 Lincoln St., Wisconsin Rapids, WI
Cafeteria

TIME: Immediately following the Educational Services Committee Meeting, but not before 6:15 p.m.

I. Call to Order

II. Public Comment

III. Actionable Items

A. Grant Elementary New Serving Line – Approval

The current serving line at Grant Elementary is in need of an update and remodel. The serving line originated from Lincoln High School and is over 40 years old. The proposed new serving line will include 4 steam wells, cold service area for fresh fruits and vegetables, and sneeze guards which are required for all service areas (see Attachment A).

The Administration recommends approval of the new kitchen serving line project for equipment and installation at Grant Elementary School from Streich Equipment for a total cost of \$28,089.00 to be funded from the 2022-23 Food Service Budget.

B. Stadium and Quadplex Sustainability Plan – Approval

The stadium and quadplex projects are nearing completion and a long term sustainability plan is needed for future large expenses that might occur.

Revenue sources for the stadium and quadplex have been identified as follows:

- Stadium Revenue Account – Ticket surcharges and rental of the stadium.
- Stadium Video Board Account – Video board sponsors/advertisements.
- Quadplex Revenue Account – Facility rental of quadplex and donations.
- Quadplex Concessions Account – Revenues from quadplex concessions.

The revenue sources listed above, will be deposited into Fund 10 throughout the school year and transferred into Fund 46 at the end of each school year. The revenues in Fund 10 and asset balances in Fund 46 will be individually tracked. Future stadium and quadplex costs will be identified on the annual 10-year plan approved by the School Board.

The District auditor has reviewed and approved the above plan. Small ongoing operating expenses for the stadium and quadplex will be expended from Fund 10 and Fund 80.

The Administration recommends the creation of fund 46 Stadium Revenue Account, Stadium Video Board Account, Quadplex Revenue Account and Quadplex Concessions Account.

C. Performing Arts Center Curtain Purchase – Approval

The Performing Arts Center (PAC) is approaching its 23rd year in operation and in need of updates to the curtain/drape system. The main curtain and masking curtains are unable to be treated effectively for fire resistance and suppression, they are faded and at the end of their useful life. The District received bids from 3 vendors to replace the curtains and curtain hardware. The bids have been reviewed and Soundworks Systems has provided the best quote and spent a significant amount of time on-site discussing the various options and materials available to replace the curtains (see Attachment B).

The Administration recommends the purchase and installation of new PAC curtains and curtain hardware from Soundworks Systems, at a total cost of \$53,066.33 to be funded from PAC Incurage funds and the 2022-23 Fund 80 Budget.

D. Performing Arts Center Carpet Replacement – Approval

The carpeting in the Performing Arts Center (PAC) is in need of replacement. Areas of carpeting are starting to pull up, bulge, and cause tripping hazards. Eric Brittnacher, PAC Director and Ed Allison, Director of Buildings and Grounds, met with several carpet vendors to determine the best approach for replacing the carpet. Eric also consulted with an interior designer to provide various carpet designs and color patterns that would bring all the various elements of the PAC together (see Attachment C).

The District is currently finalizing flooring options and awaiting final bids from the vendors. Phil Bickelhaupt, Director of Technology, will be in attendance at the Business Services Committee Meeting to present final options, bids, and a recommendation to the Business Services Committee.

E. Elementary iPad Purchase - Approval

The District is in the process of replacing our aging fleet of iPads. The Technology Department is ready to purchase another 310 iPad replacements to be placed into classrooms at the elementary level (see Attachment D).

The Administration recommends purchasing 310 iPads from Apple in the amount of \$96,565.00 to be funded from the 2022-23 Technology and Curriculum Referendum Budget.

F. Central Storage Rooftop Units – Approval

The rooftop units at Central Storage are over 20 years old and in need of replacement. Quotes were received from 2 local HVAC contractors to replace the rooftop heating and cooling units with high efficiency models that will be housed inside the storeroom to reduce energy costs and make the units easier to service (see Attachment E).

The Administration recommends purchasing two Lenox high efficiency furnaces and AC units from Rapids Sheet Metal which will include reconfiguring ductwork and creating 2 zones for a total cost of \$26,575.00 to be funded by the 2021-22 Buildings and Grounds Budget.

IV. Updates and Reports

A. Purchases – Update

Copies of the following invoices, bid specs and purchase orders will be reviewed:

- Boelter Companies - \$11,107.97 - Dough Divider Rounder - Food Service
- Boys & Girls Club - \$55,000.00 - After School Support - Community Service Fund
- ByteSpeed - \$24,390.00 – Bytespeed Servers
- Discovery Education - \$26,100.00 - Library Media Renewal -Common School Library Funds
- Heinemann - \$17,248.25 - Literacy Intervention System - Title 1
- IGE - \$49,386.31 - App #8 – Quadplex
- Midwest Netting - \$57,059.10 - Pay App #5 – Quadplex
- PDS - \$15,588.00 – HP EliteBook 830 G8 Laptops
- Robinson Brothers - \$209,717.50 - Hazardous Material Abatement – Referendum
- Streich Equipment - \$16,997.00 – THINK Academy Serving Line – Food Service
- Worthington Direct Inc. - \$15,344.63 – RCHS Furniture
- Wynn O Jones - \$14,888.00 - Flask Scrubber

V. Agenda Items

Committee members will be asked which agenda items from the Committee meeting will be placed on the consent agenda for the regular Board of Education meeting.

VI. Future Agenda Items

The Trades House Tour will take place on Monday, June 6, 2022 before Committee meetings, beginning at 4:30 p.m. The trade house address is: 3722 George Rd., Wisconsin Rapids, WI.



STREICH EQUIPMENT
COMMERCIAL KITCHEN SUPPLIES

Quote

04/15/2022

To:
Wisconsin Rapids Public Schools
Terry Wunrow
teresa.wunrow@wrps.net


Project:
WI Rapids SD - Grant Elementary


From:
Streich Equipment Co., Inc.
Nicole Miller
833 S 3rd Ave
Wausau, WI 54401
715-842-0531
715.842.0531 (Contact)
715-842-0534 (Fax)
nicole@streichequipment.com


Pricing includes inside delivery, uncrated and set-in place.

Current approximate lead times:

Dry wells with traditional breath guards = 32 days plus shipping
Dry wells with velocity breath guards = 62 days plus shipping
Drawings = 8-10 weeks from receipt of order

Item	Qty	Description	Sell	Sell Total
1	1 ea	SERVING COUNTER, UTILITY Vollrath Model No. M-37022  4-Series Signature Server® Utility Serving Counter, 60"W x 28"D x 34"H, 16/300 series stainless steel top with 1" turndown on all sides, enclosed base, 18/400 series stainless steel unibody construction, cULus, NSF, Made in USA	\$3,215.00	\$3,215.00
		Modified Base - Modifications Include:		
		- Unit to Accept Vollrath FC-4DH-04208-T - Four Well Dry Hot		
	1 ea	1 year warranty against defects in materials & workmanship		
	1 st	SS4CASTERS 4-Series Signature Server® Swivel Casters, 4"H, (2) braked, standard		
	1 ea	36681 Matte Laminate finish for 4-Series Signature Server® with Stainless Steel Countertops 60"W units with stainless steel corner & edge protectors (choose from WilsonArt standard grade 107 or 350, Formica standard grade 10 or 12, Nevamar standard grade H-5 or HF-4 & Pionite standard grade G48 **contact factory for specialty laminate request pricing & lead time**)	\$521.00	\$521.00
	1 ea	89282 Traditional Breath Guard, single-sided buffet with top shelf, 1/4 thick tempered glass secured in thick fitting channel with 1-1/2" extruded aluminum, for use with Vollrath (4) well 4-Series Signature Server® with stainless steel countertops, units, mount to stainless steel solid surface (note: requires 14 gauge stainless steel solid surface), 1-year warranty, Made in USA, contact Vollrath for dimensions	\$2,286.00	\$2,286.00
	1 ea	9879504 Upgrade to 14 gauge stainless steel work surface for, 60"W 4-Series Signature Server® Utility Station (required for this breath guard)	\$416.00	\$416.00
	1 ea	smooth stainless counter, standard		
	1 ea	99 Aluminum finish, standard		
	1 ea	NO LIGHT OR HEAT No lights or heating, standard, no charge		
	1 ea	375231450-2-C 4-Series Signature Server® V-rib Tray Slide, for customer side, 60"W x 12"D, fold-down/lift-off brackets, 14/300 series stainless steel	\$663.00	\$663.00
	1 ea	M98817-C Install plate rest or tray slide at height other than standard mounting height, Height above finished floor must be specified, Customer Side - 30" A.F.F	\$177.00	\$177.00
	1 ea	36983 Open Storage, for 60"W 4-Series Signature Server®, with reinforced bottom shelf (Bag-In-A-Box), 16-1/2"H opening (opening width depends on unit type), stainless steel	\$678.00	\$678.00
	1 ea	98850 Work surface flange modified with line-up locks, Keyhole slots on diagonal corners with stainless slide attached to side of base	\$144.00	\$144.00
	1 ea	SS-6BG-0415 6-Series Velocity Breath Guard, single-sided, adjustable, for 4-pan/well 4-series front-of-house serving	\$3,038.00	<Alternate>

Item	Qty	Description	Sell	Sell Total
		system, 59"W x 3/8" thick tempered glass panels, 11 gauge stainless steel tubing, (8) pre-set positions, accommodates full-serve, self-serve, & horizontal position, push-button mechanism enables single-person adjustment, NSF, Made in USA		
1 ea		FC-4DH-04208-T Hot Food Well Drop-In Unit, electric, dry operation only, (4) well, thermostatic control, 54-3/4"W x 26"D x 15"H, stainless steel remote control panel, includes mounting clips, 208-240/60/1-ph, 750-1000 watts per well, 14.4-16.7 amps, cord with NEMA 6-30 plug, NSF, cULus, Made in USA, (made to order)	\$2,437.00	\$2,437.00
1 ea		Drip Free Flange, std		
			ITEM TOTAL:	\$10,537.00
2	1 ea	SERVING COUNTER, UTILITY Vollrath Model No. M37022  4-Series Signature Server® Utility Serving Counter, 60"W x 28"D x 34"H, 16/300 series stainless steel top with 1" turndown on all sides, enclosed base, 18/400 series stainless steel unibody construction, cULus, NSF, Made in USA *Velocity BG as alternate *Install tray slide at 30"	\$2,159.00	\$2,159.00
1 ea		1 year warranty against defects in materials & workmanship		
1 st		SS4CASTERS 4-Series Signature Server® Swivel Casters, 4"H, (2) braked, standard		
1 ea		36681 Matte Laminate finish for 4-Series Signature Server® with Stainless Steel Countertops 60"W units with stainless steel corner & edge protectors (choose from WilsonArt standard grade 107 or 350, Formica standard grade 10 or 12, Nevamar standard grade H-5 or HF-4 & Pionite standard grade G48 **contact factory for specialty laminate request pricing & lead time**)	\$521.00	\$521.00
1 ea		89282 Traditional Breath Guard, single-sided buffet with top shelf, 1/4 thick tempered glass secured in thick fitting channel with 1-1/2" extruded aluminum, for use with Vollrath (4) well 4-Series Signature Server® with stainless steel countertops, units, mount to stainless steel solid surface (note: requires 14 gauge stainless steel solid surface), 1-year warranty, Made in USA, contact Vollrath for dimensions	\$2,286.00	\$2,286.00
1 ea		9879504 Upgrade to 14 gauge stainless steel work surface for, 60"W 4-Series Signature Server® Utility Station (required for this breath guard)	\$416.00	\$416.00
1 ea		smooth stainless counter, standard		
1 ea		99 Aluminum finish, standard		
1 ea		NO LIGHT OR HEAT No lights or heating, standard, no charge		
1 ea		SS-6BG-041S 6-Series Velocity Breath Guard, single-sided, adjustable, for 4-pan/well 4-series front-of-house serving system, 59"W x 3/8" thick tempered glass panels, 11 gauge stainless steel tubing, (8) pre-set positions, accommodates full-serve, self-serve, & horizontal position, push-button mechanism enables single-person adjustment, NSF, Made in USA	\$3,038.00	<Alternate>
1 ea		375231450-2-C 4-Series Signature Server® V-rib Tray Slide, for customer side, 60"W x 12"D, fold-down/lift-off brackets, 14/300 series stainless steel	\$663.00	\$663.00
1 ea		3698310 Open Storage, for 60"W 4-Series Signature Server®, with reinforced bottom shelf (Bag-In-A-Box), locking sliding doors (doors match base color), 16-1/2"H opening (opening width depends on unit type), stainless steel	\$917.00	\$917.00
1 ea		98850 Work surface flange modified with line-up locks, Keyhole slots on diagonal corners with stainless slide attached to side of base	\$144.00	\$144.00
1 ea		M98817-C Install plate rest or tray slide at height other than standard mounting height, Height above finished floor must be specified, Customer Side - 30" A.F.F	\$177.00	\$177.00
			ITEM TOTAL:	\$7,283.00

Item	Qty	Description	Sell	Sell Total
3	1 ea	SERVING COUNTER, COLD FOOD Vollrath Model No. M37065  4-Series Signature Server® with Stainless Steel Countertops, 34" high refrigerated cold pan, 60"W, 28"D, modular, enclosed base, with stainless steel 19-7/8" x 50-1/4" x 8" deep top well, 4-pan size, 1/4 HP, 5.5 amps, NEMA 5-15P, cULus *Velocity BG as alternate *Install tray slide at 30"	\$4,797.00	\$4,797.00
	1 ea	1 year warranty against defects in materials & workmanship		
	1 ea	36681 Matte Laminate finish for 4-Series Signature Server® with Stainless Steel Countertops 60"W units with stainless steel corner & edge protectors (choose from WilsonArt standard grade 107 or 350, Formica standard grade 10 or 12, Nevamar standard grade H-5 or HF-4 & Pionite standard grade G48 **contact factory for specialty laminate request pricing & lead time**)	\$521.00	\$521.00
	1 ea	89282 Traditional Breath Guard, single-sided buffet with top shelf, 1/4 thick tempered glass secured in thick fitting channel with 1-1/2" extruded aluminum, for use with Vollrath (4) well 4-Series Signature Server® with stainless steel countertops, units, mount to stainless steel solid surface (note: requires 14 gauge stainless steel solid surface), 1-year warranty, Made in USA, contact Vollrath for dimensions	\$2,286.00	\$2,286.00
	1 ea	9879304 Upgrade to 14 gauge stainless steel work surface for, 60"W 4-Series Signature Server® Cold Pan (required for this breath guard)	\$489.00	\$489.00
	1 ea	99 Aluminum finish, standard		
	1 ea	NO LIGHT OR HEAT No lights or heating, standard, no charge		
	1 ea	SS-6BG-041S 6-Series Velocity Breath Guard, single-sided, adjustable, for 4-pan/well 4-series front-of-house serving system, 59"W x 3/8" thick tempered glass panels, 11 gauge stainless steel tubing, (8) pre-set positions, accommodates full-serve, self-serve, & horizontal position, push-button mechanism enables single-person adjustment, NSF, Made in USA	\$3,038.00	<Alternate>
	1 ea	375231450-2-C 4-Series Signature Server® V-rib Tray Slide, for customer side, 60"W x 12"D, fold-down/lift-off brackets, 14/300 series stainless steel	\$663.00	\$663.00
	1 ea	36937-2 Open Storage Module, for 60"W 4-Series Signature Server®, 16-1/2"H opening (opening width depends on unit type), stainless steel	\$827.00	\$827.00
	1 ea	98850 Work surface flange modified with line-up locks, Keyhole slots on diagonal corners with stainless slide attached to side of base	\$144.00	\$144.00
	1 ea	M98817-C Install plate rest or tray slide at height other than standard mounting height, Height above finished floor must be specified, Customer Side - 30" A.F.F	\$177.00	\$177.00
	1 st	SS4CASTERS 4-Series Signature Server® Swivel Casters, 4"H, (2) braked, standard		
			ITEM TOTAL:	\$9,904.00

4	1 ea	LABOR Custom To deliver, uncrate, set-in place	\$365.00	\$365.00
			ITEM TOTAL:	\$365.00

Total \$28,089.00



For Instant Quotes click here:
[Restaurant Equipment Financing](#)

For more information:
email: FoodService@LeaseQ.com
phone: (781) 328-9511

Finance-to-Own

24-month term:
\$1,279.57 - \$1,345.13*

36-month term:
\$892.70 - \$961.68*

48-month term:
\$700.15 - \$772.08*

60-month term:
\$585.29 - \$659.98*

*These examples reflect actual payment ranges that businesses with more than 2 years in business receive. Payments will vary depending on the established business and personal credit.
Financing is available for Start-Ups. Payments do not include taxes.

Prices Good Until: 05/27/2022

Customer is responsible for confirming all mechanical requirements. Streich Equipment will assume no responsibility if the wrong mechanicals are ordered. Exception if a Streich representative has checked and confirmed all mechanical connections are correct on-site.

If not listed separately, please add appropriate sales tax, if applicable.

Credit card payments subject to convenience fee. Visa, Mastercard or Discover only accepted.

Thank you for requesting our quote. Please feel free to contact us with any questions.

Acceptance: _____ Date: _____

Printed Name: _____

Project Grand Total: \$28,089.00

Quote

04/04/2022

Project:
WI Rapids Grant Vollrath Dry Hot

From:
Boelter, LLC
Anne Stern
N22 W23685 Ridgeview Parkway
W
Waukesha, WI 53188
(262)523-6200
262-523-6468 (Contact)

Job Reference Number: 39168

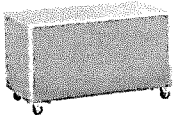
The Boelter team is dedicated to keeping you informed as global circumstances change and impact the supply chain industry. The Foodservice and supply chain have been adversely affected by escalating raw material costs, availability, delayed lead-times, labor and a significant rise in freight costs. Due to the current supply chain shortages and market volatility **prices are subject to change without notice**. All of us at Boelter appreciate your business and will continue to provide you with quality products and services.

Vollrath - This quote and pricing is effective on 12-1-2021. All PRICES ARE SUBJECT TO CHANGE without notice; and orders placed for future delivery will be invoiced at the prices in effect at the time of shipment.

Item	Qty	Description	Sell	Sell Total
1	1 ea	SERVING COUNTER, UTILITY Vollrath Model No. M-37022 4-Series Signature Server® Utility Serving Counter, 60"W x 28"D x 34"H, 16/300 series stainless steel top with 1" turndown on all sides, enclosed base, 18/400 series stainless steel unibody construction, cULus, NSF, Made in USA Modified Base - Modifications Include: - Unit to Accept Vollrath FC-4DH-04208-T - Four Well Dry Hot	\$3,315.93	\$3,315.93
	1 ea	1 year warranty against defects in materials & workmanship		
	1 st	SS4CASTERS 4-Series Signature Server® Swivel Casters, 4"H, (2) braked, standard		
	1 ea	36681 Matte Laminate finish for 4-Series Signature Server® with Stainless Steel Countertops 60"W units with stainless steel corner & edge protectors (choose from WilsonArt standard grade 107 or 350, Formica standard grade 10 or 12, Nevamar standard grade H-5 or HF-4 & Pionite standard grade G48 **contact factory for specialty laminate request pricing & lead time**)	\$537.64	\$537.64
	1 ea	89282 Traditional Breath Guard, single-sided buffet with top shelf, 1/4 thick tempered glass secured in thick fitting channel with 1-1/2" extruded aluminum, for use with Vollrath (4) well 4-Series Signature	\$2,357.38	\$2,357.38

Initial: _____

Item	Qty	Description	Sell	Sell Total
		Server® with stainless steel countertops, units, mount to stainless steel solid surface (note: requires 14 gauge stainless steel solid surface), 1-year warranty, Made in USA, contact Vollrath for dimensions		
1 ea		9879504 Upgrade to 14 gauge stainless steel work surface for, 60"W 4-Series Signature Server® Utility Station (required for this breath guard)	\$428.80	\$428.80
1 ea		smooth stainless counter, standard		
1 ea		99 Aluminum finish, standard		
1 ea		NO LIGHT OR HEAT No lights or heating, standard, no charge		
1 ea		375231450-2-C 4-Series Signature Server® V-rib Tray Slide, for customer side, 60"W x 12"D, fold-down/lift-off brackets, 14/300 series stainless steel	\$683.84	\$683.84
1 ea		M98817-C Install plate rest or tray slide at height other than standard mounting height, Height above finished floor must be specified, Customer Side - 30" A.F.F	\$182.76	\$182.76
1 ea		36983 Open Storage, for 60"W 4-Series Signature Server®, with reinforced bottom shelf (Bag-In-A-Box), 16-1/2"H opening (opening width depends on unit type), stainless steel	\$698.96	\$698.96
1 ea		98850 Work surface flange modified with line-up locks, Keyhole slots on diagonal corners with stainless slide attached to side of base	\$148.93	\$148.93
1 ea		SS-6BG-041S 6-Series Velocity Breath Guard, single-sided, adjustable, for 4-pan/well 4-series front-of-house serving system, 59"W x 3/8" thick tempered glass panels, 11 gauge stainless steel tubing, (8) pre-set positions, accommodates full-serve, self-serve, & horizontal position, push-button mechanism enables single-person adjustment, NSF, Made in USA	\$3,132.65	<Alternate>
1 ea		FC-4DH-04208-T Hot Food Well Drop-In Unit, electric, dry operation only, (4) well, thermostatic control, 54-3/4"W x 26"D x 15"H, stainless steel remote control panel, includes mounting clips, 208-240/60/1-ph, 750-1000 watts per well, 14.4-16.7 amps, cord with NEMA 6-30 plug, NSF, cULus, Made in USA, (made to order)	\$2,512.39	\$2,512.39
1 ea		Drip Free Flange, std		
Class 100		Weight: 1074 lbs total		
			ITEM TOTAL:	\$10,866.63

Item	Qty	Description	Sell	Sell Total
2	1 ea	SERVING COUNTER, UTILITY Vollrath Model No. M37022 4-Series Signature Server® Utility Serving Counter, 60"W x 28"D x 34"H, 16/300 series stainless steel top with 1" turndown on all sides, enclosed base, 18/400 series stainless steel unibody construction, cULus, NSF, Made in USA	\$2,226.21	\$2,226.21
				
		*Velocity BG as alternate *Install tray slide at 30"		
	1 ea	1 year warranty against defects in materials & workmanship		
	1 st	SS4CASTERS 4-Series Signature Server® Swivel Casters, 4"H, (2) braked, standard		
	1 ea	36681 Matte Laminate finish for 4-Series Signature Server® with Stainless Steel Countertops 60"W units with stainless steel corner & edge protectors (choose from WilsonArt standard grade 107 or 350, Formica standard grade 10 or 12, Nevamar standard grade H-5 or HF-4 & Pionite standard grade G48 **contact factory for specialty laminate request pricing & lead time**)	\$537.64	\$537.64
	1 ea	89282 Traditional Breath Guard, single-sided buffet with top shelf, 1/4 thick tempered glass secured in thick fitting channel with 1-1/2" extruded aluminum, for use with Vollrath (4) well 4-Series Signature Server® with stainless steel countertops, units, mount to stainless steel solid surface (note: requires 14 gauge stainless steel solid surface), 1-year warranty, Made in USA, contact Vollrath for dimensions	\$2,357.38	\$2,357.38
	1 ea	9879504 Upgrade to 14 gauge stainless steel work surface for, 60"W 4- Series Signature Server® Utility Station (required for this breath guard)	\$428.80	\$428.80
	1 ea	smooth stainless counter, standard		
	1 ea	99 Aluminum finish, standard		
	1 ea	NO LIGHT OR HEAT No lights or heating, standard, no charge		
	1 ea	SS-6BG-041S 6-Series Velocity Breath Guard, single-sided, adjustable, for 4-pan/well 4-series front-of-house serving system, 59"W x 3/8" thick tempered glass panels, 11 gauge stainless steel tubing, (8) pre- set positions, accommodates full-serve, self-serve, & horizontal position, push-button mechanism enables single-person adjustment, NSF, Made in USA	\$3,132.65	<Alternate>
	1 ea	375231450-2-C 4-Series Signature Server® V-rib Tray Slide, for customer side, 60"W x 12"D, fold-down/lift-off brackets, 14/300 series stainless steel	\$683.84	\$683.84
	1 ea	3698310 Open Storage, for 60"W 4-Series Signature Server®, with reinforced bottom shelf (Bag-In-A-Box), locking sliding doors (doors match base color), 16-1/2"H opening (opening width depends on unit type), stainless steel	\$945.24	\$945.24
	1 ea	98850 Work surface flange modified with line-up locks, Keyhole slots on diagonal corners with stainless slide attached to side of base	\$148.93	\$148.93
	1 ea	M98817-C Install plate rest or tray slide at height other than standard mounting height, Height above finished floor must be specified, Customer Side - 30" A.F.F	\$182.76	\$182.76

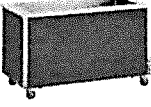
Class 100

Weight: 948 lbs total

ITEM TOTAL:

\$7,510.80
Initial: _____

Page 3 of 5

Item	Qty	Description	Sell	Sell Total
3	1 ea	SERVING COUNTER, COLD FOOD Vollrath Model No. M37065 4-Series Signature Server® with Stainless Steel Countertops, 34" high refrigerated cold pan, 60"W, 28"D, modular, enclosed base, with stainless steel 19-7/8" x 50-1/4" x 8" deep top well, 4-pan size, 1/4 HP, 5.5 amps, NEMA 5-15P, cULus	\$4,946.24	\$4,946.24
		 *Velocity BG as alternate *Install tray slide at 30"		
	1 ea	1 year warranty against defects in materials & workmanship		
	1 ea	36681 Matte Laminate finish for 4-Series Signature Server® with Stainless Steel Countertops 60"W units with stainless steel corner & edge protectors (choose from WilsonArt standard grade 107 or 350, Formica standard grade 10 or 12, Nevamar standard grade H-5 or HF-4 & Pionite standard grade G48 **contact factory for specialty laminate request pricing & lead time**)	\$537.64	\$537.64
	1 ea	89282 Traditional Breath Guard, single-sided buffet with top shelf, 1/4 thick tempered glass secured in thick fitting channel with 1-1/2" extruded aluminum, for use with Vollrath (4) well 4-Series Signature Server® with stainless steel countertops, units, mount to stainless steel solid surface (note: requires 14 gauge stainless steel solid surface), 1-year warranty, Made in USA, contact Vollrath for dimensions	\$2,357.38	\$2,357.38
	1 ea	9879304 Upgrade to 14 gauge stainless steel work surface for, 60"W 4-Series Signature Server® Cold Pan (required for this breath guard)	\$503.90	\$503.90
	1 ea	99 Aluminum finish, standard		
	1 ea	NO LIGHT OR HEAT No lights or heating, standard, no charge		
	1 ea	SS-6BG-041S 6-Series Velocity Breath Guard, single-sided, adjustable, for 4-pan/well 4-series front-of-house serving system, 59"W x 3/8" thick tempered glass panels, 11 gauge stainless steel tubing, (8) pre-set positions, accommodates full-serve, self-serve, & horizontal position, push-button mechanism enables single-person adjustment, NSF, Made in USA	\$3,132.65	<Alternate>
	1 ea	375231450-2-C 4-Series Signature Server® V-rib Tray Slide, for customer side, 60"W x 12"D, fold-down/lift-off brackets, 14/300 series stainless steel	\$683.84	\$683.84
	1 ea	36937-2 Open Storage Module, for 60"W 4-Series Signature Server®, 16-1/2"H opening (opening width depends on unit type), stainless steel	\$852.75	\$852.75
	1 ea	98850 Work surface flange modified with line-up locks, Keyhole slots on diagonal corners with stainless slide attached to side of base	\$148.93	\$148.93
	1 ea	M98817-C Install plate rest or tray slide at height other than standard mounting height, Height above finished floor must be specified, Customer Side - 30" A.F.F	\$182.76	\$182.76
	1 st	SS4CASTERS 4-Series Signature Server® Swivel Casters, 4"H, (2) braked, standard		
Class 100		Weight: 1185 lbs total		
			ITEM TOTAL:	\$10,213.44

Initial: _____

Item	Qty	Description	Sell	Sell Total
4		<p>NOTE</p> <p>Pricing good thru April 2022</p> <p>Dry wells with traditional BG = 32 days plus shipping Dry wells with velocity BG = 62 days plus shipping</p> <p>Free shipping</p> <p>Bolter would receive, uncrate, deliver and set in place at no charge. Any final utility connections by the school.</p>		
			Total	\$28,590.87

Acceptance: _____ Date: _____

Printed Name: _____

Project Grand Total: \$28,590.87



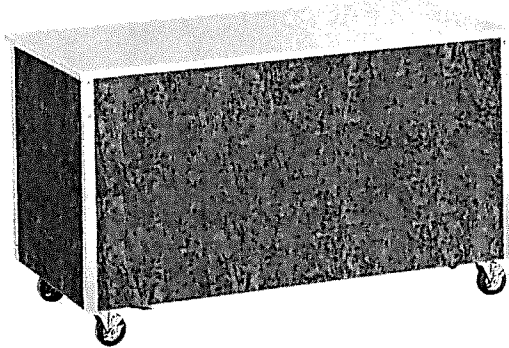
Outperform every day.™

Project:

Item Number:

Quantity:

Signature Server® Utility Stations with Stainless Steel Counters



ITEMS

Item No.	Length	Height
37020		34" (86 cm)
36120	28" (71 cm)	30" (76 cm)
36220		27" (76 cm)
37021		34" (86 cm)
36121	46" (117 cm)	30" (76 cm)
36221		27" (76 cm)
37022		34" (86 cm)
36122	60" (152 cm)	30" (76 cm)
36222		27" (76 cm)
37023		34" (86 cm)
36123	74" (188 cm)	30" (76 cm)
36223		27" (76 cm)
98711	88" (224 cm)	34" (86 cm)

STANDARD FEATURES

- Reinforced stainless steel unibody construction provides extra durability in a lightweight, mobile base
- Base is 18-gauge 400 series stainless steel with applied black laminate
- Top is one-piece 16-gauge 300 series stainless steel
- Heavy-duty 4" (10 cm) swivel casters with brakes

Note: Signature Server® equipment orders cannot be canceled or returned.

WARRANTY

All models shown come with Vollrath's standard warranty against defects in materials and workmanship. For full warranty details, please refer to www.Vollrath.com.

OPTIONS

BASE COLOR

- Black Laminate (Standard)
- Matte Laminate. Specify manufacturer/color:

- Wood Grain. Specify manufacturer/color:

- Stainless Steel

Vinyl Wrap

- Food Words
- Food Images
- Bubbles
- Checkerboard

COUNTERTOP MATERIAL

- 18 Ga Stainless Steel (Standard)
- 14 Ga Stainless Steel
- Textured Stainless Steel

BREATH GUARD STYLE

See Breath Guard Spec Sheet.

For Stainless Steel Countertops Only

- Classic Cafeteria, Single Shelf NSF Stnd
- Classic Cafeteria, Dbl. Shelf NSF Stnd
- Classic Economy Buffet NSF Stnd
- Access® - Adjustable NSF Stnd
- Access® - Non-Adjustable NSF Stnd

Traditional Style

- Double-Sided Buffet NSF Stnd
- Single-Sided Buffet NSF Stnd
- Single-Sided Buffet w/ Shelf NSF Stnd
- Cafeteria with Top Shelf NSF Stnd
- Vertical Cafeteria NSF Stnd

Progressive Style

- Double-Sided Buffet NSF Stnd
- Single-Sided Buffet w/ Shelf NSF Stnd
- Single-Sided Buffet NSF Stnd
- Cafeteria with Top Shelf NSF Stnd

Contemporary Style

- Double-Sided Buffet NSF Stnd
- Single-Sided Buffet w/ Shelf NSF Stnd
- Single-Sided Buffet NSF Stnd
- Cafeteria with Top Shelf NSF Stnd

BREATH GUARD COLOR

Progressive and Traditional

- Gray Hammer (Progressive Only)
- Aluminum (Traditional Only)
- Chrome Brass Powder Coat
- Blk. 80% Gloss Blk. Hammer Semi-Gloss
- Copper Vein White Hammer
- Silver Vein Black/White

Contemporary

- Brushed Stainless Steel Black 80% Gloss Brass Powder Coat

CUSTOM OPTIONS

Contact Vollrath Representative for all options.

- Toe Kick Electrical Outlet
- Back Splash Custom

EXTENDED WARRANTY

Contact Vollrath Representative for details.

ACCESSORIES

See Signature Server Accessories Spec Sheet.

Plate Rest w/ Mounting Kit (Stainless Steel)

- Customer Side Plain Textured
- Operator Side Plain Textured

Tray Slide, V-rib (Stainless Steel)

- Customer Side 18 Ga 14 Ga
- Operator Side 18 Ga 14 Ga

Tray Slide, Tubular (Stainless Steel)

- Customer Side Operator Side

Cutting Board

- Maple Hardwood White Poly

End Shelf (Stainless Steel)

- Operator Left Operator Right
- Operator Left and Operator Right

Storage Module

- With Doors Without Doors

Bag in Box

- Stainless Steel With Doors
- Galvanized Without Doors

Stationary Legs

- Adjustable 4-5" 4" Fixed 6" Fixed

Line Locks

- Line Locks

Approvals	Date

Due to continued product improvement, please consult www.vollrath.com for current product specifications.

Signature Server® Utility Stations with Stainless Steel Counters

The Vollrath Company, L.L.C.



Specializing In Audio/Video/Lighting Consultation, Design, Sales, Service,
Installation, Production Services & Rental
P.O. Box 882 Stevens Point WI 54481
Phone: 715-341-1365 Fax: 715-341-0731
Email: kent@soundworkssystems.com

March 8, 2022

Wisconsin Rapids Performing Arts Center Stage Curtains

1. Stage Curtains Replacement

- A. Grand Valence. "Plum" or TBD 25oz. Charisma 50% Full with Webbing, Grommets and Ties. 2" Hem on Sides. Bottom Chain Hem Lined 5". Size 10'-0" High x 62'8" Wide. (21 Panels).

- B. Grand Drape. "Plum" or TBD 25oz. Charisma 50% Full with Webbing and Snap Hooks Above. 3" Hem Offstage. 9" Turnback Onstage, no Lining. Bottom Chain Hem Lined 5".
 - 1. SR Section 22'-0" High x 35'-0" Wide. (12 Panels).
 - 2. SL Section 22'-0" High x 35'-0" Wide. (12 Panels).

- C. Mid-Stage Traveler. Black 25oz. Charisma 50% Full with Webbing and Snap Hooks Above. 3" Hem Offstage. 9" Turnback Onstage, no Lining. Bottom Chain Hem Lined 5".
 - 1. SR Section 21'-0" High x 35'-0" Wide. (12 Panels).
 - 2. SL Section 21'-0" High x 35'-0" Wide. (12 Panels).

- D. Up-Stage Traveler. Black 25oz. Charisma 50% Full with Webbing and Snap Hooks Above. 3" Hem Offstage. 9" Turnback Onstage, no Lining. Bottom Chain Hem Lined 5".
1. SR Section 21'-0" High x 35'-0" Wide. (12 Panels).
 2. SL Section 21'-0" High x 35'-0" Wide. (12 Panels).
- E. 1st Border. Black 25oz. Charisma Sewn Flat with Webbing, Grommets and Ties. 2" Hem on Sides. Bottom Chain Hem Lined 5". Size 6'-0" High x 62'-8" Wide. (14 Panels).
- F. 2nd Border. Black 25oz. Charisma Sewn Flat with Webbing, Grommets and Ties. 2" Hem on Sides. Bottom Chain Hem Lined 5". Size 8'-0" High x 62'-8" Wide. (14 Panels).
- G. 3rd Border. Black 25oz. Charisma Sewn Flat with Webbing, Grommets and Ties. 2" Hem on Sides. Bottom Chain Hem Lined 5". Size 6'-0" High x 62'-8" Wide. (14 Panels).
- H. 4th Border. Black 25oz. Charisma Sewn Flat with Webbing, Grommets and Ties. 2" Hem on Sides. Bottom Chain Hem Lined 5". Size 8'-0" High x 62'-8" Wide. (14 Panels).
- I. 5th Border. Black 25oz. Charisma Sewn Flat with Webbing, Grommets and Ties. 2" Hem on Sides. Bottom Chain Hem Lined 5". Size 8'-0" High x 62'-8" Wide. (14 Panels).
- J. 1st Legs. Black 25oz. Charisma Sewn Flat with Webbing, Grommets and Ties. 2" Hem on Sides. Bottom Chain Hem Lined 5".
1. SL Section 22'-0" High x 13'-2" Wide. (3 Panels).
 2. SR Section 22'-0" High x 13'-2" Wide. (3 Panels).
- K. 2nd Legs. Black 25oz. Charisma Sewn Flat with Webbing, Grommets and Ties. 2" Hem on Sides. Bottom Chain Hem Lined 5".
1. SL Section 22'-0" High x 13'-2" Wide. (3 Panels).
 2. SR Section 22'-0" High x 13'-2" Wide. (3 Panels).

- L. 3rd Legs. Black 25oz Charisma Sewn Flat with Webbing, Grommets and Ties. 2" Hem on Sides. Bottom Chain Hem Lined 5".
 - 1. SL Section 22'-0" High x 13'-2" Wide. (3 Panels).
 - 2. SR Section 22'-0" High x 13'-2" Wide. (3 Panels).

- M. 4th Legs. Black 25oz. Charisma Sewn Flat with Webbing, Grommets and Ties. 2" Hem on Sides. Bottom Chain Hem Lined 5".
 - 1. SL Section 22'-0" High x 13'-2" Wide. (3 Panels).
 - 2. SR Section 22'-0" High x 13'-2" Wide. (3 Panels).

- N. Scrim. Black Trevira CS Sharktooth Scrim, IFR. Webbing, Grommets and Ties. 2" Hem on Sides. Pipe Pocket with Skirt 5" Bottom. Size 22'-0" High x 62'-0" Wide.

1) Curtain Track Hardware.

- A. 2801 Single Carrier. 204 Pieces.
- B. 2826 Rubber Spacer. 205 Pieces.
- C. 2827 Rubber Spacer. 205 Pieces.
- D. 2802 Master Carrier. 6 Pieces.
- E. Stretch Resistant Sash Cord. Black #12.
 - 1. 170' For Grand Drape.
 - 2. 168' For Mid-Stage Traveler.
 - 3. 168' For Up-Stage Traveler

Pricing:

Materials \$46,231.33

Installation (Includes Removal/Disposal) \$2,720.00

Professional Services \$1,040.00

Shipping Estimate (subject to change) \$3,395.00

Grand Total \$53,066.33

Owner to provide:

1- Stage Tech familiar with the counterweight rigging system and be present during installation to assist with balancing the counterweight system as needed.

1- Scissor Lift

Materials Quote Valid for 30 Days

Respectfully Submitted,

Kent Laabs

Soundworks Systems Inc.



February 16, 2022

Wisconsin Rapids Performing Arts Center

Project: Curtain Package Upgrade
Quote# 2022000147
Attn: Eric Brittnacher

Following is our pricing for this project. Pricing is based on information provided by Eric Brittnacher.

Note: This quote includes a site visit to determine curtain track condition and subsequently determine if additional hardware and labor is required. If hardware is required a change order will need to be issued for this work to be performed.

Bill of Materials

Quantity	Description
1	Grand Valance Curtain Panel Sized at 6 Feet High x 63 Feet Wide Manufactured From 24oz IFR Charisma Velour sewn with 50% fullness sewn in through box pleats. Top Finish to be Standard Grommets, Jute and Ties. Bottom Finish to be 5-Inch Hem with Internal Chain Weight.
2	Grand Drape Curtain Panels Sized at 20 Feet High x 35 Feet Wide Manufactured From 24oz IFR Charisma Velour sewn with 50% fullness sewn in through box pleats. Top Finish to be Standard Grommets, Jute, and Bitsnaps. Bottom Finish to be 5-Inch Hem with Internal Chain Weight.
1	Border Curtain Panel Sized at 8 Feet High x 63 Feet Wide Manufactured From 24oz IFR Charisma Velour sewn with 50% fullness sewn in through box pleats. Top Finish to be Standard Grommets, Jute and Ties. Bottom Finish to be 5-Inch Hem with Internal Chain Weight.
2	Leg Curtain Panels Sized at 21 Feet High x 8 Feet Wide Manufactured From 24oz IFR Charisma Velour sewn with 50% fullness sewn in through box pleats. Top Finish to be Standard Grommets, Jute and Ties. Bottom Finish to be 5-Inch Hem with Internal Chain Weight.
1	Border Curtain Panel Sized at 8 Feet High x 63 Feet Wide Manufactured From 24oz IFR Charisma Velour sewn with 50% fullness sewn in through box pleats. Top Finish to be Standard Grommets, Jute and Ties. Bottom Finish to be 5-Inch Hem with Internal Chain Weight.
2	Leg Curtain Panels Sized at 21 Feet High x 8 Feet Wide Manufactured From 24oz IFR Charisma Velour sewn with 50% fullness sewn in through box pleats. Top Finish to be Standard Grommets, Jute and Ties. Bottom Finish to be 5-Inch Hem with Internal Chain Weight.
2	Mid Stage Traveler Curtain Panels Sized at 19 Feet High x 35 Feet Wide Manufactured From 24oz IFR Charisma Velour sewn with 50% fullness sewn in through box pleats. Top Finish to be Standard Grommets, Jute, and Bitsnaps. Bottom Finish to be 5-Inch Hem with Internal Chain Weight.

1 Border Curtain Panel Sized at 8 Feet High x 63 Feet Wide Manufactured From 24oz IFR Charisma Velour sewn with 50% fullness sewn in through box pleats. Top Finish to be Standard Grommets, Jute and Ties. Bottom Finish to be 5-Inch Hem with Internal Chain Weight.

2 Leg Curtain Panels Sized at 21 Feet High x 8 Feet Wide Manufactured From 24oz IFR Charisma Velour sewn with 50% fullness sewn in through box pleats. Top Finish to be Standard Grommets, Jute and Ties. Bottom Finish to be 5-Inch Hem with Internal Chain Weight.

1 Border Curtain Panel Sized at 4 Feet High x 62 Feet Wide Manufactured From 24oz IFR Charisma Velour sewn with 50% fullness sewn in through box pleats. Top Finish to be Standard Grommets, Jute and Ties. Bottom Finish to be 5-Inch Hem with Internal Chain Weight.

2 Leg Curtain Panels Sized at 21 Feet High x 8 Feet Wide Manufactured From 24oz IFR Charisma Velour sewn with 50% fullness sewn in through box pleats. Top Finish to be Standard Grommets, Jute and Ties. Bottom Finish to be 5-Inch Hem with Internal Chain Weight.

1 Border Curtain Panel Sized at 4 Feet High x 62 Feet Wide Manufactured From 24oz IFR Charisma Velour sewn with 50% fullness sewn in through box pleats. Top Finish to be Standard Grommets, Jute and Ties. Bottom Finish to be 5-Inch Hem with Internal Chain Weight.

2 Upstage Traveler Curtain Panels Sized at 19 Feet High x 35 Feet Wide Manufactured From 24oz IFR Charisma Velour sewn with 50% fullness sewn in through box pleats. Top Finish to be Standard Grommets, Jute, and Bitsnaps. Bottom Finish to be 5-Inch Hem with Internal Chain Weight.

1 Additional Border Curtain Panel Sized at 4 Feet High x 62 Feet Wide Manufactured From 24oz IFR Charisma Velour sewn with 50% fullness sewn in through box pleats. Top Finish to be Standard Grommets, Jute and Ties. Bottom Finish to be 5-Inch Hem with Internal Chain Weight.

6 Additional Leg Curtain Panels Sized at 7 Feet High x 19 Feet Wide Manufactured From 24oz IFR Charisma Velour sewn with 50% fullness sewn in through box pleats. Top Finish to be Standard Grommets, Jute and Ties. Bottom Finish to be 5-Inch Hem with Internal Chain Weight.

1 Scrim Curtain Sized at 19 Feet High x 59 Feet Wide Manufactured From Black FR Scrim Sewn Flat. Top Finish to be Grommets, Jute, and Ties. Bottom Finish to be Pipe Pocket.

1 Seamless Cyc Curtain Sized at 25 Feet High x 63 Feet Wide Manufactured From White IFR Trevira Polyester Muslin. Top Finish to be Grommets, Jute, and Ties. Bottom Finish to be Pipe Picket.

Services

Site Visit to Verify Curtain Track Condition and Determine Needed Maintenance

Delivery of Materials to Site

Curtain Track Maintenance as Determined from Site Visit

Curtain Hang

Base System Package Price:	\$ 59,965.00
Sales Tax, if Applicable (5.5%):	\$ 3,298.10
Total Price:	\$ 63,263.10

Assumptions/Exceptions for Base Bid

1. **Pricing is firm for sixty (60) days.**
2. Sales/Use Taxes are **as shown, if required**. Sales tax if required will be billed at the local sales tax rates in force at the time of billing.
3. Freight costs are **INCLUDED** ground. Expedited shipping may be billed additionally.
4. Term: Deposits may be required without established credit. Orders accepted by Mainstage Theatrical Supply, Inc. (P.O.'s, Contracts, Letters of Intent) that incur costs such as submittal preparation, deposits to vendors, meeting attendance will incur cancelation fees. All orders are subject to progress billing over the project duration.
5. Generally, lead time for curtains is 6 to 12 weeks upon receipt of approved drawings and color selection. **Due to nationwide part shortages, we are unable to guarantee lead times.**
6. **Proposal assumes adequate structural support for all static and dynamic loads have been reviewed and approved by the structural engineer of record. Structural engineering for any facility members is not included. Approval of attachment means and methods for items provided by MainStage will be sought from the Architect and or engineer of record. Additional structural support steel where required has not been included.**
7. General Liability Insurance included: \$2,000,000 General Aggregate, \$1,000,000 Products & Completed Operations, \$1,000,000 Personal & Advertising Injury, \$1,000,000 Each Occurrence. Umbrella Liability: \$5,000,000 per Occurrence and Annual Aggregate. Contractual liability and standard Additional Insured included. Waivers of subrogation/special provisions are not included and will incur additional cost.
8. Workers Compensation Insurance included: \$1,000,000/accident or disease with a \$1,000,000 limit. Waivers of subrogation/special provisions are not included and will incur additional cost.
9. **Bid Bond and Payment/Performance Bonds are not included or offered unless otherwise stated.**
10. **Any changes after the date of quotation to US import fees or taxes on products included in this quotation will be passed on to purchaser.**

Customer safety is our primary concern; we are an ETCP-recognized employer, and we employ multiple ETCP Certified Technicians. For more information, visit <http://etcp.esta.org>.

If you have any questions, please contact me directly.

Sincerely,
Caroline Norton
Sales and Consulting Support Specialist
Desk: 414-831-9981
Work Cell: 850-602-0563
cnorton@mainstage.com

Estimate



Lighthouse Productions, a division of Theatre Sound & Lighting Inc.

Project: Curtain Replacement - WI Rapids

Project #: 22-0110

Status: Proposed

Terms

Payment Terms: 50% Down Net 30

Estimate Date: 2/11/2022

Valid through: 3/13/2022

Phone: (920) 338-3442
Fax: (920) 338-3452
Address: 1010 Waube Ln.
Green Bay, WI 54304
Tax ID: 0344439
Web: www.lhprod.com
Project Manager: Neil Roehrborn

Wisconsin Rapids Performing Arts Center
Attn: Eric Brittnacher
1801 16th St. S
Wisconsin Rapids, WI 54494

Customer Contact: Eric Brittnacher
Phone:
Mobile:
Email: eric.brittnacher@wrps.net
Please sign and return estimate to confirm project.

Job: Curtain Replacement (Per Specs) - WI Rapids

Job Number: 22-0110.01

Job Information:

Job Type: Sale
Delivery Type: Freight

Job Location:

Wisconsin Rapids Performing Arts Center
1801 16th St. S
Wisconsin Rapids, WI 54494

Job Services:

Sale Items

Grand Valence

Notes: Grand Valence / 63'-0"w X 6'-0"h / IFR 25oz Velour -
Color Ruby to be chosen from standard color cards /
Vertical Seams / Unlined / 50% Fullness / Finishes: Top-
WGT / Bottom- Hem with Weights / Sides- 2" Hem

Qty	Item
-----	------

1	Grand Valence Part#117505Q
---	----------------------------

Grand Valence Sale Total \$2,351.75

Grand Drape

Notes: Grand Drape / each panel 35'-0"w X 20'-0"h
-IFR 25oz Velour
- Color Ruby to be chosen from standard color cards / Vertical Seams / Lined / 50% Fullness
-Finishes: Top- Hidden Snaphooks / Bottom- Hem with Weights / Onstage Side- Half Width Faceback / Offstage
Side- 6" Hem

Qty	Item
-----	------

2	Grand Drape Part#117596Q
---	--------------------------

Grand Drape Sale Total \$8,314.50

Estimate



Lighthouse Productions, a division of Theatre Sound & Lighting Inc.

Project: Curtain Replacement - WI Rapids

Borders (tall)

Notes: Borders (tall) / 63'-0"w X 8'-0"h
-IFR 25oz Velour
-Black/ Vertical Seams / Unlined / 50% Fullness
Finishes: Top- WGT / Bottom- Hem with Weights / Sides- 2" Hem

Qty Item

3 Borders (tall) Part#117507Q

Borders (tall) Sale Total \$8,521.50

Borders (Short)

Notes: Borders (short) / 62'-0"w X 4'-0"h
-IFR 25oz Velour
-Black / Vertical Seams / Unlined / 50% Fullness
-Finishes: Top- WGT / Bottom- Hem with Weights / Sides-2" Hem

Qty Item

3 Borders (short) Part#117508Q

Borders (Short) Sale Total \$4,933.50

Legs

Notes: Legs / 8'-0"w X 21'-0"h
-IFR 25oz Velour
-Black / Vertical Seams / Unlined / 50% Fullness
-Finishes: Top-WGT / Bottom- Hem with Weights / Sides- 4" Hem

Qty Item

8 Legs Part#117509Q

Legs Sale Total \$7,304.80

Extra Legs

Notes: Extra Legs / 7'-0"w X 19'-0"h
-IFR 25oz Velour
-Black / Vertical Seams / Unlined / 50% Fullness
-Finishes: Top- WGT / Bottom- Hem with Weights / Sides- 4" Hem

Qty Item

6 Extra Legs Part#117510Q

Extra Legs Sale Total \$4,264.20

Midstage & Upstage Traveler

Notes: Midstage & Upstage Traveler / each panel 35'-0"w X 19'-0"h
-IFR 25oz Velour
-Black / Vertical Seams / Unlined / 50% Fullness
-Finishes: Top- Hidden Saphook / Bottom- Hem with Weights / Onstage Side- 12" Hem / Offstage Side- 4" Hem

Qty Item

4 Midstage & Upstage Traveler Part#117511Q

Midstage & Upstage Traveler Sale Total \$13,330.80

Estimate



Lighthouse Productions, a division of Theatre Sound & Lighting Inc.

Project: Curtain Replacement - WI Rapids

Scrim IFR

Notes: Scrim / 59'-0"w X 19'-0"h
-IFR Sharktooth Poly-Scrim
-Black / Seamless / Unlined / 0% Fullness /
-Finishes: Top- WGT / Bottom- Pipe Pocket / Sides- 2' Hem

Qty Item

1 Scrim Part#117514Q

Scrim IFR Sale Total \$2,656.50

Cyc

Notes: Cyc / 63'-0"w X 25'-0"h / FR Muslin - Light Blue /
Seamless / Unlined / 0% Fullness / Finishes: Top- WGT /
Bottom- Pipe Pocket / Sides- 2' Hem

Qty Item

1 Cyc Part#117513Q

Cyc Sale Total \$4,582.75

Trucking/Transportation

1 Pickup Truck
Date: 2/11/2022 to 2/12/2022
1 Trailer (Enclosed)
Date: 2/11/2022 to 2/12/2022

Transport Subtotal: \$273.00

Staff

3 Install - Field Labor

Staff Subtotal: \$1,770.00

Job Costs

Shipping - Retail Misc - Freight

Job Cost Subtotal: \$975.00

Job Subtotals

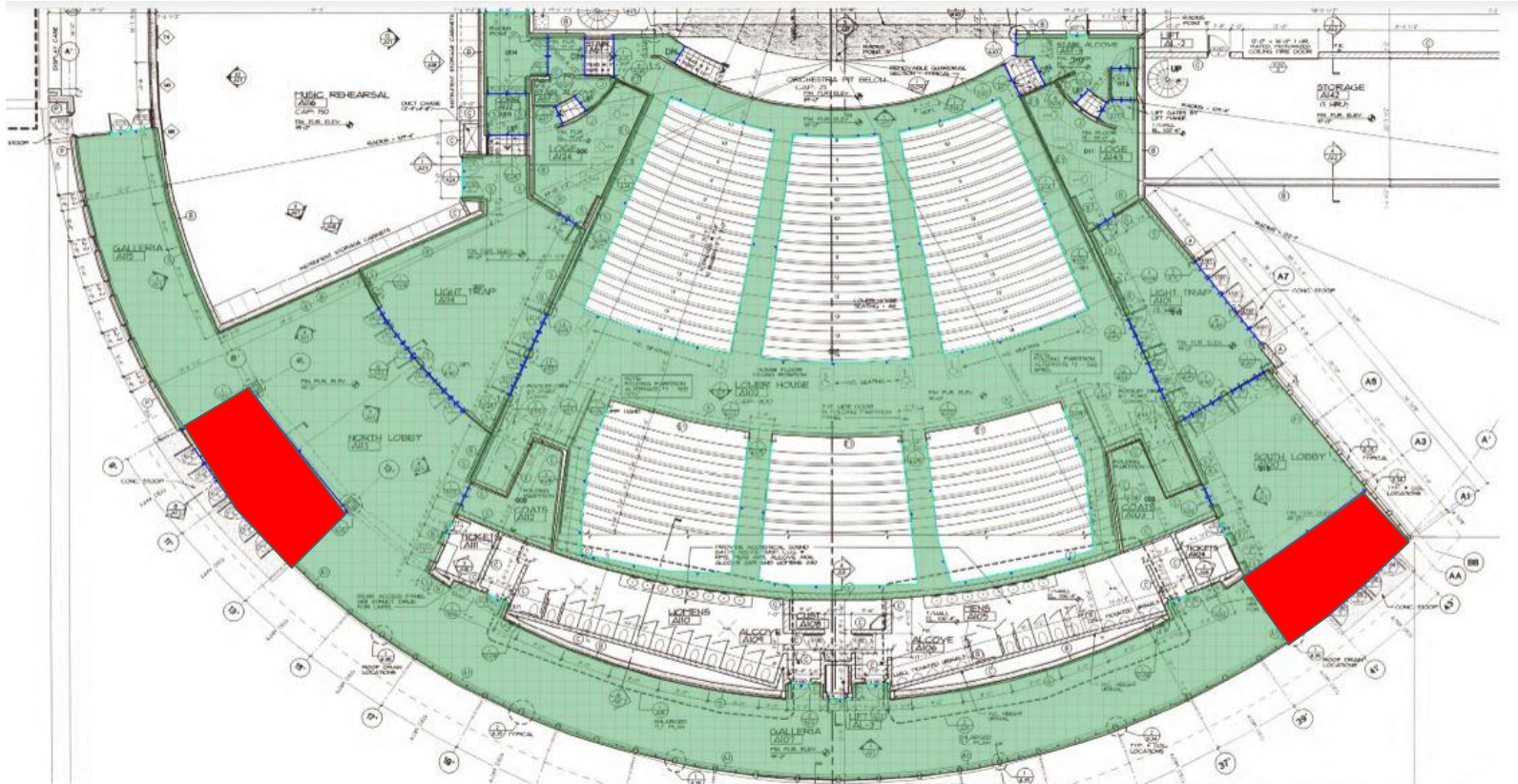
Sale Items: \$56,260.30
Trucking: \$273.00
Job Subtotal Staff: \$1,770.00
Job Subtotal Jobcosts: \$975.00
Job Subtotal: \$59,278.30
Job Total Tax: \$0.00

Curtain Replacement (Per Specs) - WI Rapids \$59,278.30
Job Total:

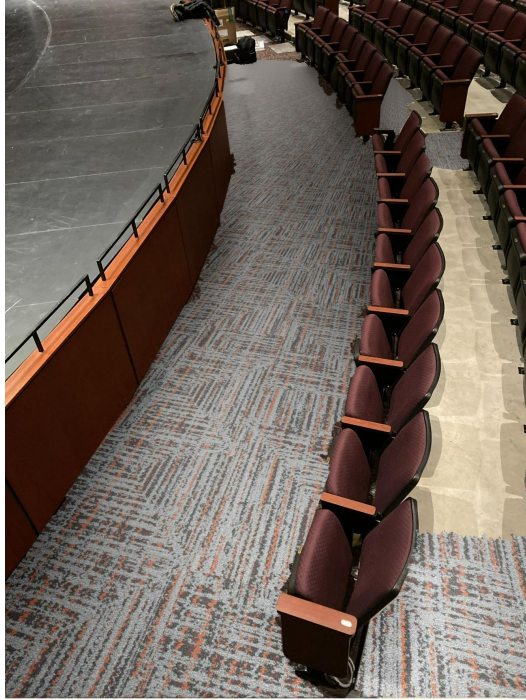
Grand Total

Project Net Total \$59,278.30
Grand Total: \$59,278.30

Walk-off Carpet Plan



Side By Side



Side by Side Tile
Join Color

shawcontract.floorvanaplus.com



Side by Side Tile
Join Color

shawcontract.floorvanaplus.com



Side by Side Tile
Join Color

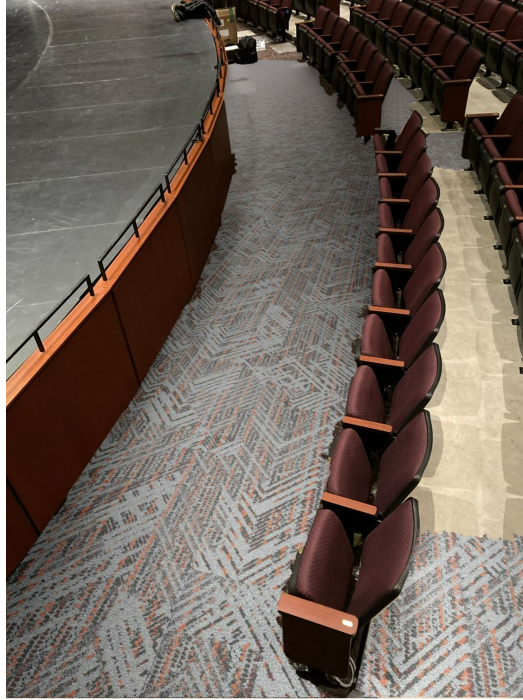
shawcontract.floorvanaplus.com

Hand in Hand



Hand in Hand Tile
Join Color

shawcontract.floorvanaplus.com



Hand in Hand Tile
Join Color

shawcontract.floorvanaplus.com



Hand in Hand Tile
Join Color

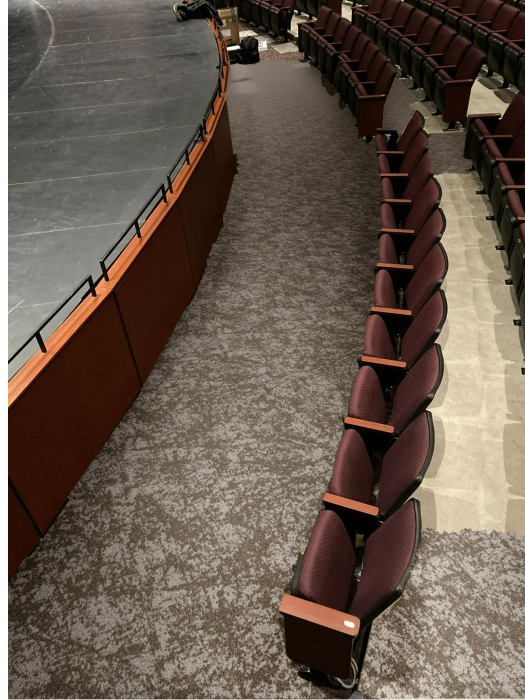
shawcontract.floorvanaplus.com

Plains Summit



Plains Tile
Summit

shawcontract.floorvanaplus.com



Plains Tile
Summit

shawcontract.floorvanaplus.com



Plains Tile
Summit

shawcontract.floorvanaplus.com

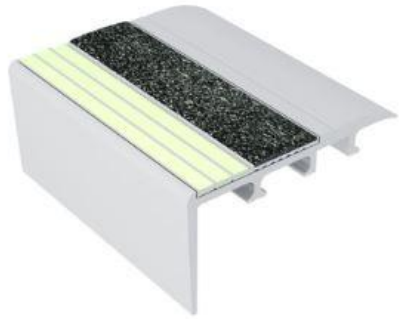
Plains Summit with Brilliant Summit Accent



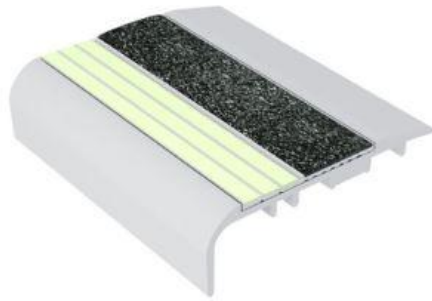
Brilliant Summit is a partner to the Plains Summit and Brilliant Summit carpet lines.

This could be implemented to create a breakup in the Plains Summit pattern (i.e. step treads, along straight walls, etc)

Photoluminescent Stair Nosing



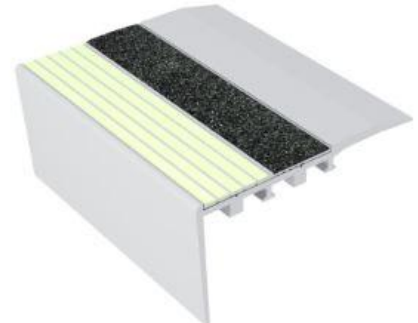
C4-E20 Series



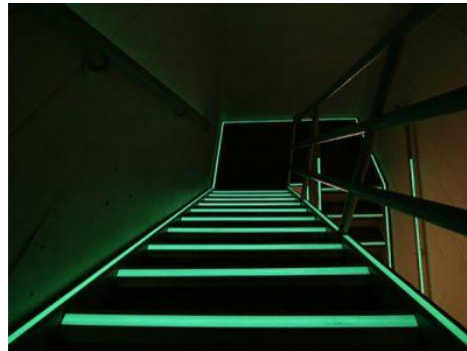
C5-E20 Series



RC4-E30 Series



RC4-E40 Series



Carpet backing options/questions answered

--Performance of the Ecologix backing vs the standard Ecoworx backing on the carpet tiles?

EcoWorx is our every day, tried and true non-PVC tile backing. It's also recyclable at the end of its life and has been around for over 30 years.

EcoLogix is our breathable, recycled from plastic bottles, cushion carpet tile. It's great for moisture issues (still not confident that's what is happening at PAC), additional acoustics, and under foot comfort

--Pricepoint difference between these two backing options?

EcoLogix is exactly \$4 more per square yard

--Is the ES self-adhesive standard with Ecologix backing tiles? If not, additional cost for this mill-applied adhesive. Also if not, what are the other adhesive options and price points?

We don't have self-adhesive tiles, with this size job it would probably be more efficient to use a spreadable adhesive. The labor cost of peel and stick could add cost, but I'd lean on the dealers to answer that question and to advise on the installation.

--Adhesive performance on standard Ecoworx backing between these options -- LocDots vs LocTabs vs traditional glue. And price points for these three options.

Again, price point would be more about the time to install with each option. I don't recommend Lokdots for this job, it would be time consuming and expensive with no advantage. Loktabs would be fine, but again, not much of an advantage and they can't be mill-applied. Depending on what moisture levels come back from the slab we may need to use our moisture resistant adhesive, but if the testing comes back with noconcerns, then the added cost would be unnecessary.



Proposal

Proposal Number

2110664618

Account Number/Name

1268847

WISCONSIN RAPIDS PUBLIC SCHOOLS

Created On

04/21/2022

Created By

Melissa Bouchard

Thank you for creating your proposal, details are provided below. You can access this proposal from your Apple Store for Education Institution by searching proposal number 2110664618.

Item	Product / Description	Total Quantity	Unit Price	Total Price
1	MK2Y3LL/A 10.2-inch iPad Wi-Fi 64GB - Space Gray (Packaged in a 10-pack)	310	294.00	91,140.00 USD
2	HL2M2LL/A Jamf School for macOS, iOS and tvOS lifetime license (per unique device)	310	17.50	5,425.00 USD
			Subtotal	96,565.00 USD
			Estimated Tax	0.00 USD
			Total	96,565.00 USD

Please note that your order subtotal does not include sales tax or rebates. Sales tax and rebates, if applicable, will be added when your order is processed. Your order total may include estimated sales tax that is subject to change at the time your order is processed.

How to Order

If you would like to convert this Proposal to an order, log into your Apple Store for Education Institution and select 'Proposal' from the pull-down menu. Search for this Proposal by entering the Proposal Number referenced above.

Note: A Purchaser login is required to order. Visit your Apple Store for Education Institution to login or create your Purchaser Apple ID.

Proposal



RAPIDS SHEET METAL HEATING & COOLING

631 N. 17th Street
WISCONSIN RAPIDS, WI 54494
Phone (715) 421-5555



PROPOSAL SUBMITTED TO Wisconsin Rapids Public Schools	PHONE	DATE 04/26/2022
STREET Attn. Ed Allison	JOB NAME OR FAX # Edwin.Allison@Wrps.Net	
CITY, STATE AND ZIP CODE Wisconsin Rapids, Wi 54495	JOB LOCATION Revised From 10/21/2021	ATTENTION

**Proposal - office HVAC re-work 2510 Industrial Street (Buildings and Grounds)
Remove one package rooftop unit.**

Install two high efficiency furnaces and AC units to replace.

- Lennox ML96XV two stage 96% variable blower furnaces. (on floor)
- Lennox 13ACX 13 SEER AC units and coils (on ground)*.

(with txv's, liquid line solenoids, sight glasses)*

Includes connecting to existing ductwork (configure for two zones).

Condensate pumps, gas lines, one thermostat (re-use one thermostat).

All refrigeration, pvc intake and exhaust venting.

High efficiency MERV 11 5" filters and cabinets.

Two fresh air intakes - connect to return ducts - with barometric operated dampers.

Price with all labor, materials, equipment

\$ 26,575

By owner: - patch roof curb - electrical
 - install new flashings - repair of ceiling grid

thank you 50% down payment to order equipment. Prices good for 30 days.

As required by the Wisconsin Construction Lien Law, builder hereby notifies owner that persons or companies furnishing labor or materials for the construction on owner's land may have Lien Rights on owners's land and building if not paid. Those entitled to Lien Rights, in addition to the undersigned builder, are those who contract directly with the owner or those who give the owner notice within 60 days after they first furnish labor or materials for the construction. Accordingly, owner probably will receive notices from those who furnish labor or materials for the construction, and should give a copy of each notice received to his mortgage lender, if any, to see that all potential Lien claimants are duly paid.

The undersigned customer hereby agrees to pay interest on the unpaid balance of this contract at the rate of 1.5% per month. Unless agreed herein to the contrary, all accounts are payable in full ten (10) days from the date of bill. Refund deposits subject to 20% fee.

Acceptance: Rapids Sheet Metal is hereby authorized to furnish goods and/or services as specified above, for which we agree to pay on the terms agreed upon above.

Rapids Sheet Metal Works, Inc.

Signed: _____

By _____

Nathan Schill

Date: _____

4-26-22



2431 49th Street South, Wisconsin Rapids, WI 54494
Phone 715-421-1525

April 27, 2022
Mr. Ed Allison
WRPS
Wisconsin Rapids, WI

Re: Building and Grounds Office HVAC remodel project-Updated

Thank you for the opportunity to provide a proposal to remodel the HVAC system in your office.

As we discussed, we would install two furnace systems in the storage room. One system would serve the east side of the building and one would serve the west side. We would use the existing supply air duct system. We would install new return air ducting and grilles.

Equipment and material to be provided as follows:

- 1 60,000 btu furnace with 3-ton cooling system for the west offices
- 1 80,000 btu furnace with a 4-ton cooling system for the east offices
- 2 Programmable thermostats
- Low ambient controls
- New supply and return air ducting as required
- PVC furnace venting through the roof
- Air conditioner refrigeration lines to the units on the roof
- Pipe portal
- Condensate pump to pump water to the janitor mop sink
- 8" fresh air intake
- Gas piping from existing
- Remove the existing rooftop
- Provide an insulated cap for the existing curb
- Start-up and adjustment
- Test and balance
- Building permit
- Crane fees
- One-year parts and labor warranty

Not included:

- Line voltage electrical
- State approved plans or fees. If the city requires plans add \$750
- Roof patching
- Removal of the existing curb
- State or county tax

Total cost for the above installed.....\$32,534.00

Pricing valid for 30 days.

Let me know if you have any questions.

Sincerely,

Tim Mancl, P.E.
Project Manager